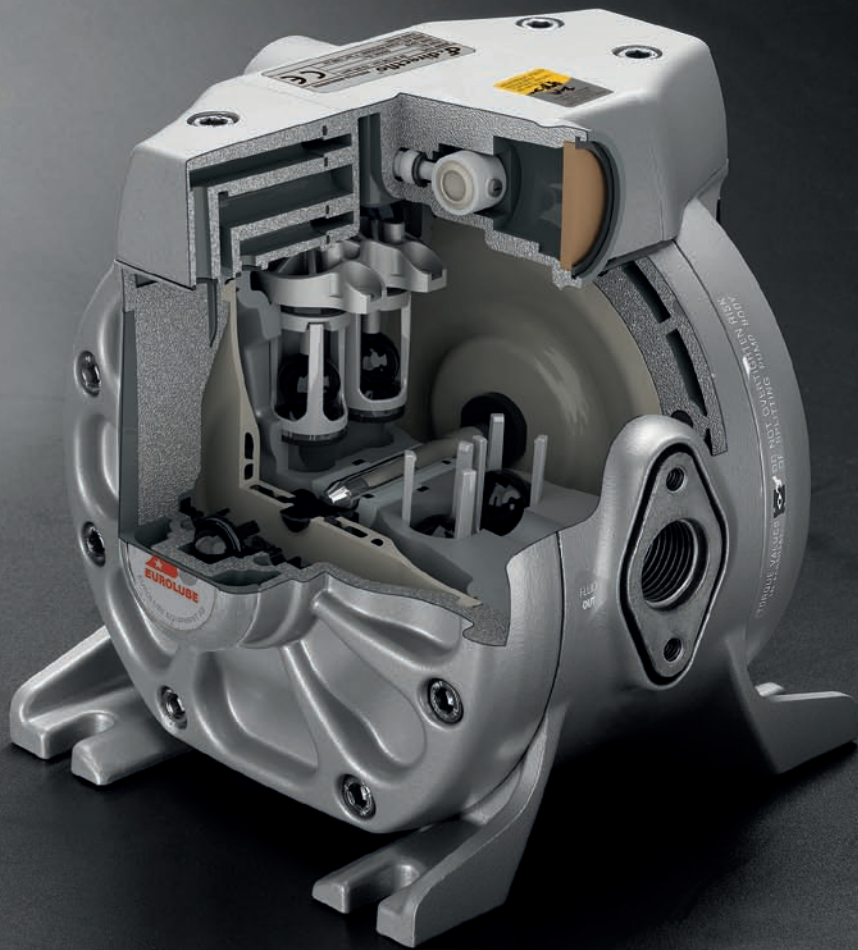




DIAPHRAGM PUMPS

2012-01



DirectFlo® Unique Diaphragm Pumps

CAPACITY UP TO 100L/MIN • COMPACT DESIGN • EXCELLENT SYSTEM PUMP •
IN-LINE MOUNTING • UNIQUE AIR VALVE • WIDE RANGE OF APPLICATIONS •

DirectFlo® available in a variety of materials in the pump body, diaphragm and check valves. Easier installation thanks to the unique design.

MANUFACTURE AND DEVELOPMENT USING THE LATEST TECHNOLOGY

 www.eurolube.com

DirectFlo® DIAPHRAGM PUMPS

MANUFACTURE AND DEVELOPMENT USING THE LATEST TECHNOLOGY

DF50 ALUMINIUM – MAX 50L/MIN – MAX AIR PRESSURE 7 BAR



- DF50 Aluminium, with its unique and compact design offers smarter installation and in-line mounting.
- Two base models, standard and mixing. Standard model is with 1/2" In-Out. Mixing models with 2x3/8" connections on the suction side. Mix easily two different fluids – 50/50.
- Pump body in Aluminium with NBR seals is ideal for oils, coolants and other petroleum products, etc.
- Pump body in Nickel coated Aluminium with Hytrel Diaphragms is suitable for wind shield fluid, oil, coolant, etc.
- Pump body in Nickel coated Aluminium with PTFE Diaphragm is suitable for wind shield fluid, oil, coolant, etc.
- For selecting the most suitable pump, please visit: www.eurolube.com/chemcomp.
Choose your fluid and the pump material for a quick answer if your choice is compatible with the fluid.

DF50 STD PART NO	CONNECTION AIR	CONNECTION IN-OUT	MAX SOLIDS	MATERIAL PUMP BODY	MATERIAL SEALS	MATERIAL CHECK VALVE	MATERIAL DIAPHRAGM	MAX TEMP
11720	3/8"	1/2" - 1/2"	3 mm	Aluminium	NBR	Acetal	Hytrel	+80°C
11721	3/8"	1/2" - 1/2"	3 mm	Nickel coated Al	Viton	Acetal	Hytrel	+80°C
11722	3/8"	1/2" - 1/2"	3 mm	Nickel coated Al	PTFE	PTFE	PTFE	+100°C
DF 50 MIX								
11725	3/8"	2x3/8" - 1/2"	3 mm	Nickel coated Al	Viton	Acetal	Hytrel	+80°C
11726	3/8"	2x3/8" - 1/2"	3 mm	Nickel coated Al	PTFE	PTFE	PTFE	+100°C

DF50 COMPOSITE – MAX 50L/MIN – MAX AIR PRESSURE 7 BAR



- DF50 Composite, with its unique compact desing offers smarter installation and in-line mounting.
- Two base models, standard and mixing. Standard model is with 1/2" In-Out. Mixing models with 2x3/8" connections on the suction side. Mix easily two different fluids 50/50.
- Pump body in Acetal, with Hytrel Diaphragms is excellent for Urea, wind shield fluid, etc.
- Pump body in Acetal, with PTFE Diaphragms handles a variety of chemicals, see below.
- Pump body in Polypropylene with Hytrel Diaphragms have a good general chemical resistance, see below.
- Pump body in Polypropylene with PTFE Diaphragms handles a variety of chemicals, see below.
- For selecting the most suitable pump, please check: www.eurolube.com/chemcomp.
Choose your fluid and the pump material for a quick answer if your choice is compatible with the fluid.

DF50 STD PART NO	CONNECTION AIR	CONNECTION IN-OUT	MAX SOLIDS	MATERIAL PUMP BODY	MATERIAL SEALS	MATERIAL CHECK VALVE	MATERIAL DIAPHRAGM	MAX TEMP
11730	3/8"	1/2" - 1/2"	3 mm	Acetal	Viton	Acetal	Hytrel	+80°C
11731	3/8"	1/2" - 1/2"	3 mm	Polypropylene	Viton	PTFE	Hytrel	+70°C
11732	3/8"	1/2" - 1/2"	3 mm	Polypropylene	PTFE	PTFE	PTFE	+70°C
11733	3/8"	1/2" - 1/2"	3 mm	Acetal	PTFE	PTFE	PTFE	+80°C
DF 50 MIX								
11735	3/8"	2x3/8" - 1/2"	3 mm	Acetal	Viton	Acetal	Hytrel	+80°C
11736	3/8"	2x3/8" - 1/2"	3 mm	Polypropylene	PTFE	PTFE	PTFE	+70°C
11737	3/8"	2x3/8" - 1/2"	3 mm	Acetal	PTFE	PTFE	PTFE	+80°C
11738	3/8"	2x3/8" - 1/2"	3 mm	Polypropylene	Viton	PTFE	Hytrel	+70°C

DirectFlo® DIAPHRAGM PUMPS

MANUFACTURE AND DEVELOPMENT USING THE LATEST TECHNOLOGY

DF100 ALUMINIUM & COMPOSITE – MAX 100L/MIN – MAX AIR PRESSURE 7 BAR



- DF100, with its unique compact desing offers smarter installation and in-line mounting.
Examples of application:
- Pump body in Aluminium with NBR seals is ideal for oil, coolant and other petroleum products, etc.
- Pump body in Polypropylene with Hytrel Diaphragms gives good chemical resistance. NOT for petroleum based solvents.
- For selecting the most suitable pump, please check: www.eurolube.com/chemcomp.
Choose your fluid and the pump material for a quick answer if your choice is compatible with the fluid.

DF100 STD PART NO	CONNECTION AIR	CONNECTION IN-OUT	MAX SOLIDS	MATERIAL PUMP BODY	MATERIAL SEALS	MATERIAL CHECK VALVE	MATERIAL DIAPHRAGM	MAX TEMP
11760	3/8"	1" - 1"	4 mm	Aluminium	Nitril	Hytrel	Hytrel	+80°C
DF100 COMPOSITE								
11770	3/8"	1" - 1"	4 mm	Polypropylen	Viton	Hytrel	Hytrel	+70°C

DF50 ATEX – MAX 50L/MIN – MAX AIR PRESSURE 7 BAR – ATEX APPROVED



- We offer explosion proof pumps, according to the ATEX directive.
- Our pumps are manufactured according to the following directives:
EN-809:1999+A1, EN 13463-1 and EN 1127-1.
- ATEX reference number: LOM 10ATEX0105X
- For selecting the most suitable pump, please check: www.eurolube.com/chemcomp.
Choose your fluid and the pump material for a quick answer if your choice is compatible with the fluid.



DF50 ATEX PART NO	CONNECTION AIR	CONNECTION IN-OUT	MAX SOLIDS	MATERIAL PUMP BODY	MATERIAL SEALS	MATERIAL CHECK VALVE	MATERIAL DIAPHRAGM	MAX TEMP
11750	3/8"	1/2" - 1/2"	3 mm	Conductive Acetal	Viton	PTFE	PTFE	+80°C
11751	3/8"	1/2" - 1/2"	3 mm	Conductive Acetal	Viton	Acetal	Hytrel	+80°C

APPLICATIONS



DirectFlo® diaphragm pumps are compatible with a wide range of fluids:

- Oil products
- Diesel
- Urea / AdBlue® / DEF
- Degreasers
- Solvents
- Chemicals
- Abrasive fluids
- Flammable liquids

For selecting the most suitable pump, please check: www.eurolube.com/chemcomp.
Choose fluids and materials in pump for fast answers, if your choice is compatible with the fluid.

DirectFlo® diaphragm pumps are used in all kinds of industries: automotive, transportation, mining, industrial, aerospace, agriculture, etc.

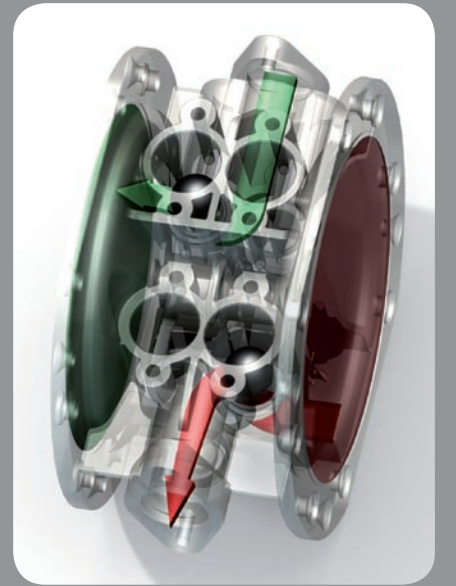
CENTRAL FLOW – IN-LINE MOUNTING

- The fluid follows a straight and direct flow path, through the center of the body.
- Easy maintenance, all wearing parts can be replaced while the pump is installed.
- Can pump up to 4 mm solids.
- Self priming, maximum suction lift up to 8 m.
- Excellent for in-line mounting.

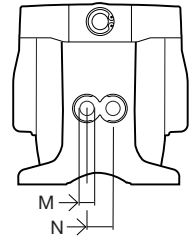
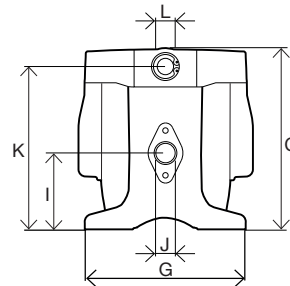
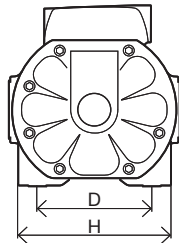
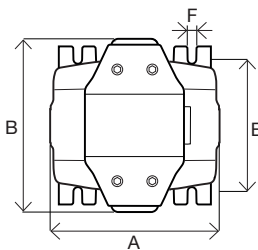


UNIQUE AIR VALVE

- Unique patented frictionless pivoting air valve, it switches up to 20 times faster than conventional valves.
- The advantage is greatly reduced pulsation.
- Only one moving part in the air valve.
- Few parts thanks to our unique design.

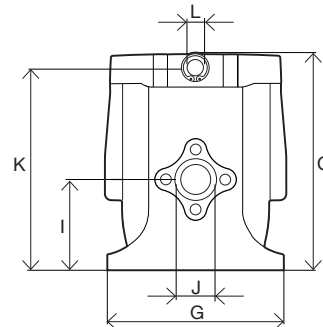
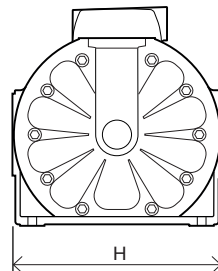
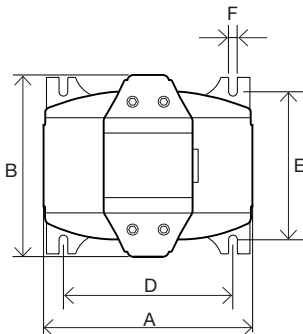


MEASUREMENTS



DF50 (mm)

A	B	C	D	E	F	G	H	I	J	K	L	M	N
158	160	167	105	122	8	146	140	70	1/2"	150	3/8"	2X3/8"	24



DF100 (mm)

A	B	C	D	E	F	G	H	I	J	K	L
216	189	227	175	154	9	184	210	94,5	1-1/4"	210	3/8"



EUROLUBE EQUIPMENT AB

Stråssavägen 2, SE-711 76 Storå, Sweden

EMAIL eurolube@eurolube.com

PHONE +46 581 836 65

FAX +46 581 409 75

www.eurolube.com