



E80-SERIES PISTON PUMPS

E *EFFICIENT*
ENDURING

MANUFACTURING AND DEVELOPMENT WITH THE LATEST TECHNOLOGY

 www.eurolube.com

2017-01
E80-Series PISTON PUMPS

E80-SERIES AIR OPERATED PISTON PUMPS

EUROLUBE EQUIPMENT

REASONS FOR CHOOSING E80-SERIES

EFFICIENT

The pump is the heart in all lubrication systems. The E80-series is a high performance pump for large piping installations where high flow rates for many simultaneous dispenses are required. Four different models, two for oil and two for grease makes it easy to choose the most suitable pump for the application.

ENDURING

The pump has been tested in the field for a long time and requires minimal maintenance after being put into operation.

FOUR VERSIONS:

5:1 Oil pump

- Medium to large pipe systems with simultaneous dispensing, automotive and industry
- Engine oil, gear oil, transmission oil
- Drum and stub

15:1 Oil pump

- Large pipe systems with simultaneous dispensing, automotive and industry.
- Engine oil, gear oil, transmission oil.
- Grease transfer
- Drum and stub

60:1 Grease pump

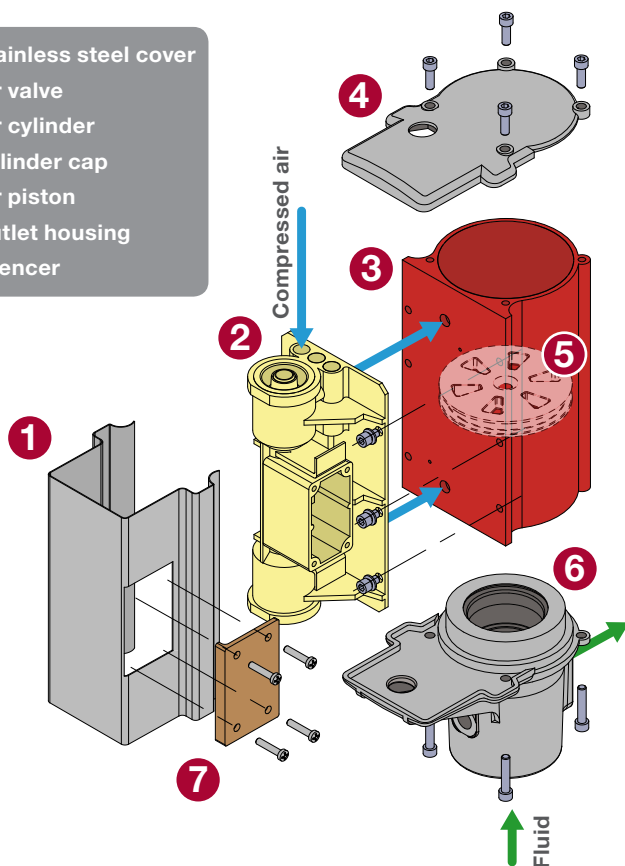
- Medium to large pipe systems for grease in automotive and industrial applications.
- For 20, 50 & 180kg drums

80:1 Grease pump

- Medium to large pipe systems for grease in automotive and industrial applications.
- For 20, 50 & 180kg drums

LUFTMOTOR

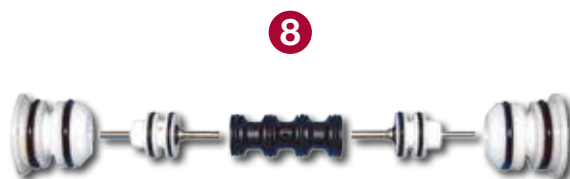
1. Stainless steel cover
2. Air valve
3. Air cylinder
4. Cylinder cap
5. Air piston
6. Outlet housing
7. Silencer



The new E80-Series has an air valve (2) based on a valve shaft (8) which runs in a valve bushing and thus regulates the air flow. When the air piston (5) travels downwards in the air cylinder (3) and passes the lower air conduit, the air actions on a pilot valve which causes the valve shaft to reverse direction and the piston will begin to travel upwards.

Simultaneously, the returned air is blown out through the silencer (7). When the piston then passes the upper air conduit, the same switch occurs as before. During both the upwards and downwards stroke fluid will be fed through the housing's outlet port (6).

Due to the fact that the air valve is mounted externally on the air cylinder, any downtime for service and maintenance is minimized.



E80-SERIES AIR OPERATED PISTON PUMPS

EUROLUBE EQUIPMENT

PUMP KITS

Complete kits simplify installation, purchasing and project planning.
The kits are complete with hoses, adapters and air quick couplers.

• FIXED INSTALLATION



PART. NO.
157-03 (5:1)

**5:1 & 15:1 Oil pump kit
for tanks**



PART. NO.
157-04 (5:1)

**5:1 & 15:1 Oil pump kit for
drums and IBC containers**



PART. NO.
257-25FP (60:1)

**60:1 & 80:1 Grease pump
kit for 180 and 50kg drums**

• IBC CONTAINER



PART. NO.
157-15 (5:1)

**5:1 & 15:1 Oil pump kit
w/ high volume oil gun**



**5:1 & 15:1 Oil pump kit
with high volume digital
meter and hose reel**

PART. NO.
157-16 (5:1)

• MOBILE UNITS



PART. NO.
157-24 (5:1)

**5:1 Oil pump kit with hose reel,
heavy duty trolley and high
volume digital meter**



PART. NO.
257-15FP (60:1)

**60:1 Grease pump kit
with trolley for 50 kg
drums, 3 m hose and
grease gun**

TECHNICAL DATA: OIL PUMPS

DATA	E80 5:1 DRUM	E80 5:1 STUB	E80 15:1 DRUM	E80 15:1 STUB
Part number	15730	15731	15740	15741
Pressure ratio	5:1		15:1	
Air connection	1/4" BSP (F)			
Inlet	–	1" BSP (F)	–	3/4" BSP (F)
Outlet	3/4" BSP (F)			
Air pressure	0,4 – 1,0 MPa (4-10 bar)			
Max air consumption	Approximately 850 l/min, free flow at 0,7 MPa (7 bar)			
Max output pressure	5 MPa (50 bar)		15 MPa (150 bar)	
Air motor bore	80 mm			
Air motor stroke	100 mm			
Free flow	38 l/min ¹		15 l/min ²	
Noise level	84 – 86 dB			
Length (mm)	1180	500	1180	500
Pump tube Ø (mm)	50		32	
Pump tube len. (mm)	910	230	910	235
Weight (kg)	6.5	4.9	4.5	6.0

¹ Free flow using engine oil SAE 10-30 at 1,0 MPa, 20°C² Free flow using engine oil SAE 10-30 at 0,7 MPa, 20°C

TECHNICAL DATA: GREASE PUMPS

DATA	E80 15:1 20KG	E80 60:1 12-20KG	E80 60:1 50-60KG	E80 60:1 185KG	E80 80:1 12-20KG	E80 80:1 50-60KG	E80 80:1 180KG
Part number	15742	25737	25736	25735	25794	25796	25795
Pressure ratio	15:1	60:1			80:1		
Air connection	1/4" BSP (F)						
Inlet	Slit	Slit, inlet filter can be purchased separately					
Outlet	3/4" (F)	3/8" (F)					
Air pressure	0,4 – 1,0 MPa (4-10 bar)				0,4 – 0,7 MPa (4-7 bar)		
Max air consumption	Approximately 850 l/min, free flow at 0,7 MPa (7 bar)						
Max output pressure	15 MPa (150 bar)	60 MPa (600 bar)			80 MPa (800 bar)		
Air motor bore	80 mm						
Air motor stroke	100 mm						
Free flow	15 l/min ¹	1100 g/min ² / 600 g/min ³			800 g/min ² / 500 g/min ³		
Noise level	84 – 86 dB						
Length (mm)	710	700	1000	1180	710	1010	1190
Pump tube Ø (mm)	32	30					
Pump tube len. (mm)	445	450	750	930	460	760	940
Weight (kg)	4.2	4.7	5.8	6.5	5.5	6.9	7.9

¹ Free flow using engine oil SAE 10-30 at 0,7 MPa, 20°C² Free flow using NLGI 2 at 0,7 MPa, 20°C³ Flow using grease gun 26716, 10 m 1/4" grease hose, NLGI 2 at 0,7 MPa, 20°C

• Eurolube is a Swedish brand specializing in the manufacture, distribution, and support of environmentally-friendly products and tailor-made complete and professional solutions for the handling of lubricants and other fluids.



• We are recognized for our instant support and service from simple advice to fully integrated systems tailored to the needs of each customer.

• We provide a professional line of fluid handling solutions within all business sectors.

EUROLUBE EQUIPMENT

Grustagsvägen 4, SE-138 40 Älta, Sweden

TEL +46 (0)8-747 67 10

EMAIL eurolube@alentec.se