

F15-SERIES HOSE REEL / SLANGUPPRULLARE

PART NO 17885 / ART.NR. 17885



2017-01 ORIGINAL MANUAL

SERVICE GUIDE

DESCRIPTION

Extremely robust high delivery and high hose capacity. A pair of rugged reliable springs assist to rewind the hose. Heavy duty hose reel. All metal construction polyester powder coated.

FLUIDS	HOSE CAPACITY
Water, diesel fuel, suction, DEF.	1-1/2" 15 m (50')

INSTALLATION-OPERATION

Settle the hose reel over a horizontal robust surface. There are two different hose outlet positions available. To be able to change the hose outlet position, it is necessary:

1. Make sure the hose reel is firmly fixed over a horizontal surface.
2. The spool must be blocked by means of the ratchet, to avoid the power springs to turn it. To block the spool, extract the hose to the nearest blocking ratchet position. During the hose outlet substitution process, be careful not to let the spool turn freely.
3. Unscrew the bolts (1), take out the hose outlet rollers (2), and disassemble the crosspiece (4) (fig. 1).
4. Orientate the hose (it is not necessary to disassemble the hose stopper) towards the new hose outlet position. To do this, grab firmly the hose, unlatch the spool and turn it until the hose reach its new position (fig. 2). Then, latch the spool again, at the nearest position.
5. Assemble between then, the hose outlet components took apart previously as shown (fig. 3), and take them to their new position as shown. Then, screw the bolts (3) (fig. 4).
6. Finally, assemble the crosspiece (4) (fig. 4) at the indicated position.

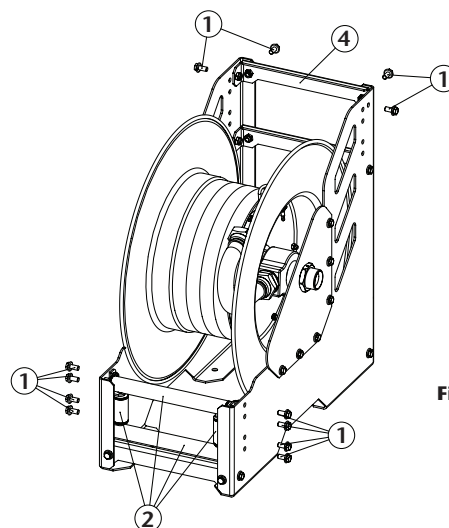


Fig. 1

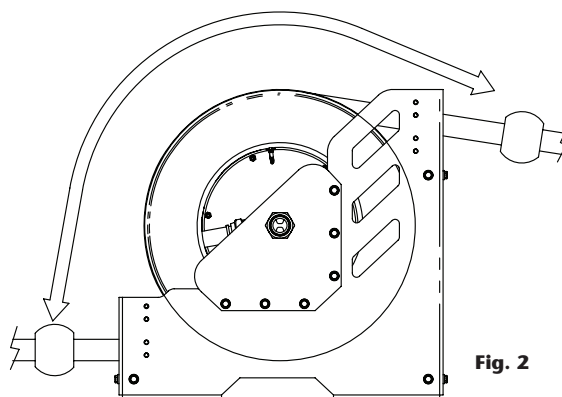


Fig. 2

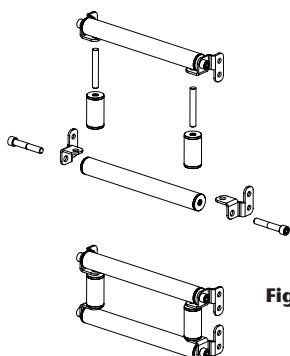


Fig. 3

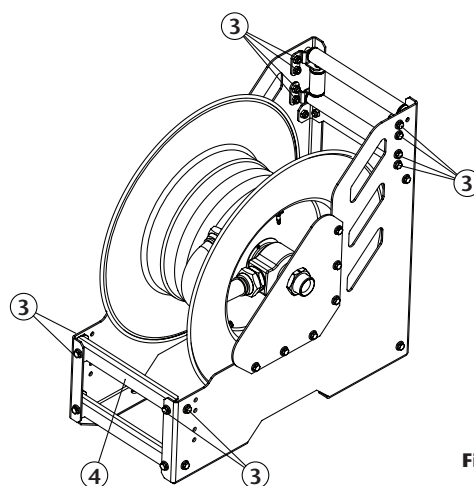


Fig. 4

MAINTENANCE



WARNING: Before carrying out any kind of maintenance, close the nearest shut off valve to the hose reel and open the dispensing valve to relieve the pressure in the hose. The reel spring is under very high tension and can cause serious injury if it is released. Therefore, do not attempt to service the spring inside the reel.

F15-SERIES HOSE REEL / SLANGUPPRULLARE

PART NO 17885 / ART.NR. 17885

HOSE INSTALLATION THE FIRST TIME

NOTE: During hose installation, tighten the U-bolt just till the hose gets slightly deformed. Do not overtighten the U-bolt, since the hose could be damaged.

To install the hose the first time, follow the next steps:

1. Make sure the power springs are relaxed, with no tension, in such a way that the spool does not try to turn (the ratchet must be unlocked).
2. Connect the new hose to the gooseneck (2), place the U-bolt (1) (fig. 5) in such a way that it firmly holds the hose against the spool, and start to wind the hose into the spool turning the spool manually.
3. Once the hose is completely wound around the spool (the power springs still will be with no tension), apply the pretension to the power springs by turning the spool the number or turns stated in the table depending on the hose length (see table), turning in positively direction as shown in (fig. 6). Do not apply more tension than stated, as the power springs could be damaged.
4. Pass the hose end through the roller outlet to the desired length, lock the spool with the ratchet in the nearest position and place the hose stopper (fig. 7) making sure the latch keeps accessible.
5. Fully unwind and rewind the hose to make sure the power springs are correctly tensioned. The hose reel is equipped with 2 strong power springs working in parallel to assist during the hose rewinding.

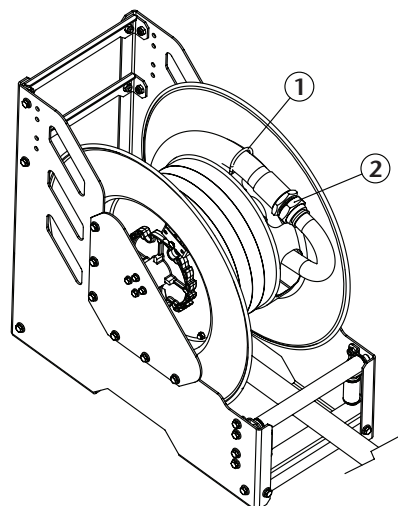


Fig. 5

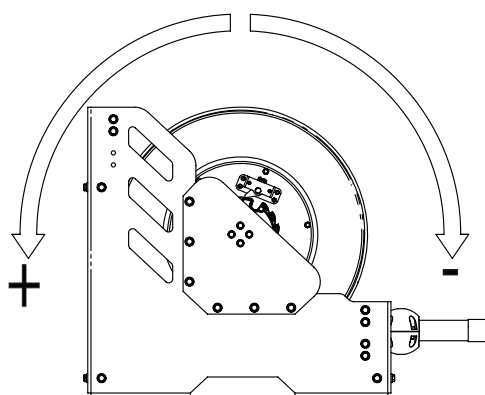


Fig. 6

HOSE LENGTH	HOSE 1 1-2"
15 m (50')	+ 7 turns

HOSE REPLACEMENT

NOTE: During hose installation, tighten the U-bolt just till the hose gets slightly deformed. Do not overtighten the U-bolt, since the hose could be damaged.

1. Ensure the reel is firmly attached. Take the hose fully out and let the spool blocked by the ratchet mechanism.

NOTE: beware the spool to get loose and start turning freely.

2. Remove the U-bolt (1) by loosening its nuts and disconnect the hose from the gooseneck (2) (fig. 5).
3. Take away the hose from the spool and remove the hose stopper in order to use it with the new hose.
4. Connect the new hose to the gooseneck. Place the U-bolt in such a way that it firmly holds the hose against the spool, and pull the hose in order to unlock the ratchet.
5. Allow the hose to slowly wind into the spool and ensure to finish with the whole hose inside the reel and the power springs with no tension (in such a way that the spool does not try to turn).
6. Apply the pre-tension to the power springs by turning the spool towards positive direction, the number of turns indicated in (fig. 6), depending on the hose length. Do not apply more tension than stated, as the power spring could be damaged.
7. Pass the hose end through the roller outlet to the desired length, lock the spool with the ratchet in the nearest position and place the hose stopper (fig. 7) making sure the latch keeps accessible.
8. Fully unwind and rewind the hose to make sure the power spring is correctly tensioned. The hose reel is equipped with 2 strong power springs working in parallel to assist during the hose rewinding.

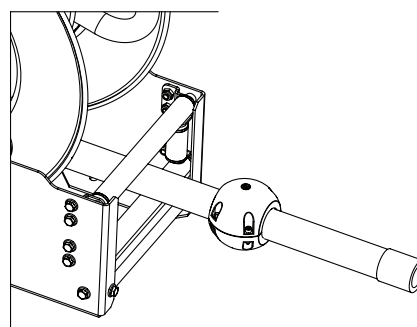
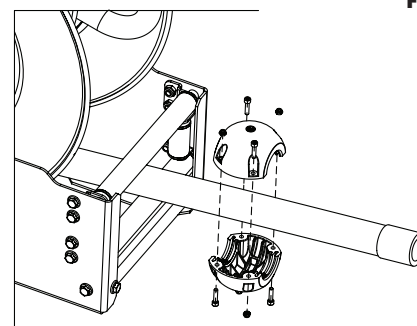


Fig. 7



SPRING LOAD ADJUSTMENT

If you wish to increase or decrease the power springs tension:

1. Pull the hose out till the first ratchet locking position.
2. Remove the hose stopper and pull the hose out in order to unlock the ratchet.
3. Allow the hose to fully wind into the spool, applying some counter-force in order to avoid the spool to turn freely.

NOTE: beware the spool may get loose and start turning freely.

4. Turn the spool to increase or decrease the power springs tension. Never exceed the turns indicated in the table (fig. 6).
5. Pass again the hose end through the roller outlet and place the hose stopper (fig. 7) at the desired position.
6. Make sure that the hose fully winds and unwinds properly. If it does not, repeat the previous steps until it does.

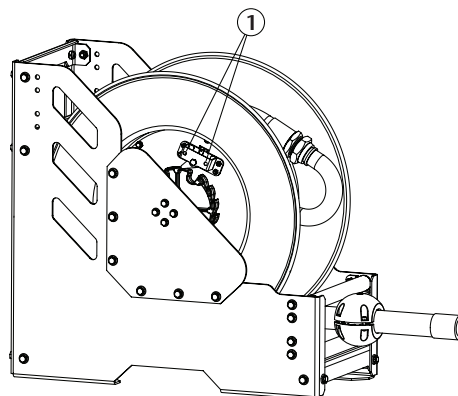


Fig. 8

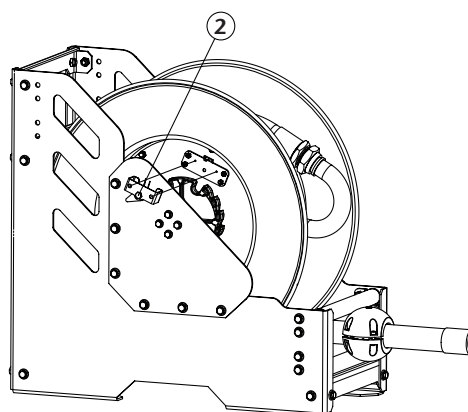


Fig. 9

SWIVEL REPLACEMENT

1. Disconnect the hose of the inlet shaft (1) (fig. 10).
2. Loosen the set screw in the nut (2) and remove said nut (3) (fig. 11).
3. Remove the screws (4) and the lateral cover (5) and the spacer tube (6) (fig. 11).
4. Remove the gooseneck from the swivel. Use two wrenches in order to avoid any shaft damage.
5. Remove the swivel (7) (fig. 11 & 12) and replace it with a new one, or replace the seals (8) (fig. 12). Make sure the seals are placed correctly.
6. Grease the interior of the swivel and place it carefully back on the shaft until it touches the bearing on the spool.
7. Place back the rest of parts in reverse order.

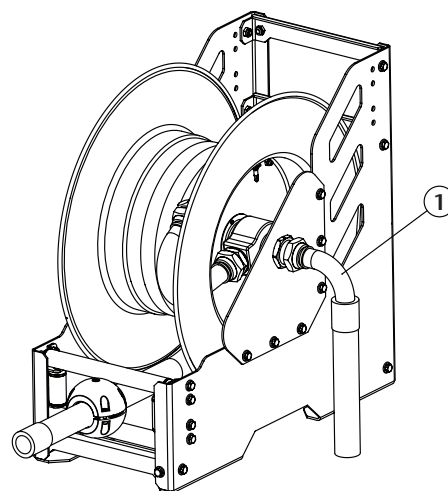


Fig. 10

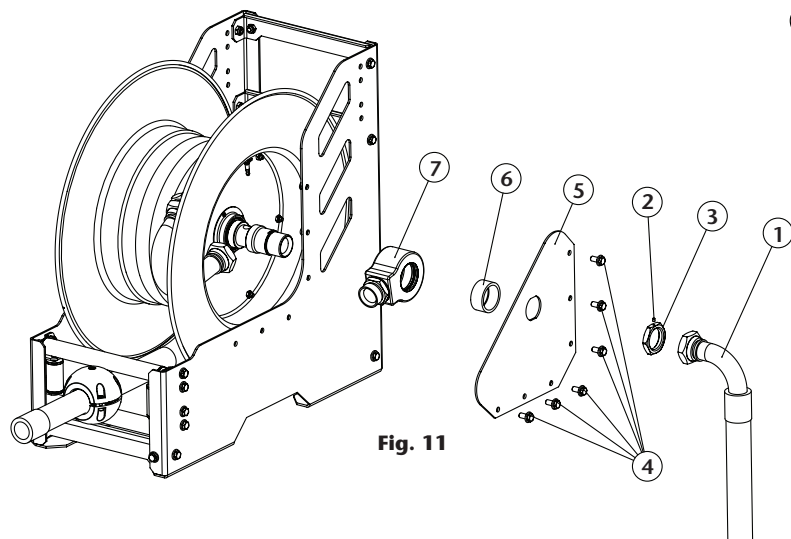


Fig. 11

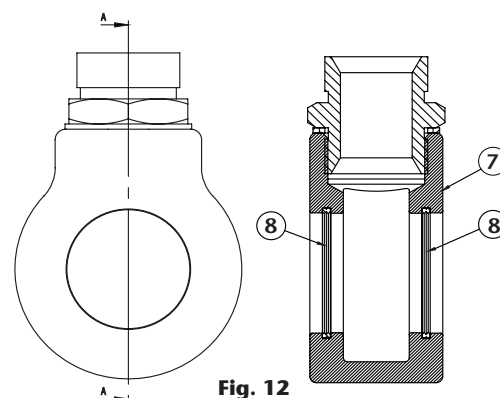
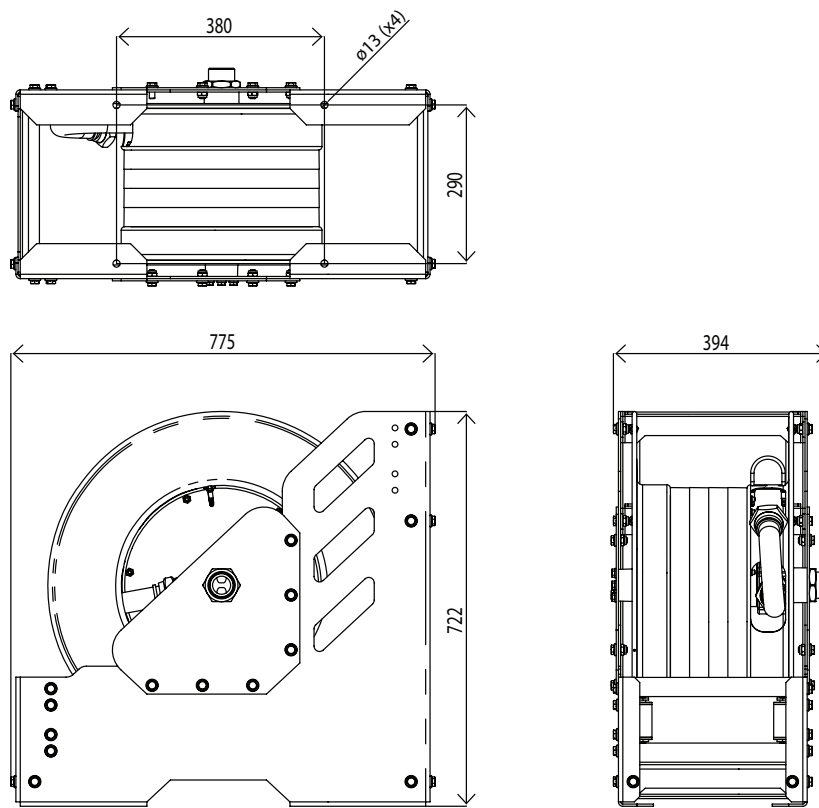


Fig. 12

F15-SERIES HOSE REEL / SLANGUPPRULLARE

PART NO 17885 / ART.NR. 17885

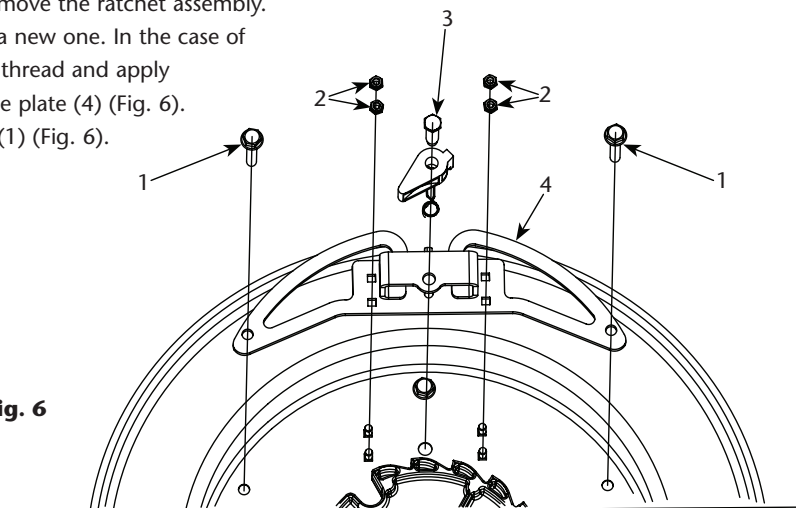
DIMENSIONS / DIMENSIONES / DIMENSÕES / РАЗМЕРЫ



LATCH REPLACEMENT

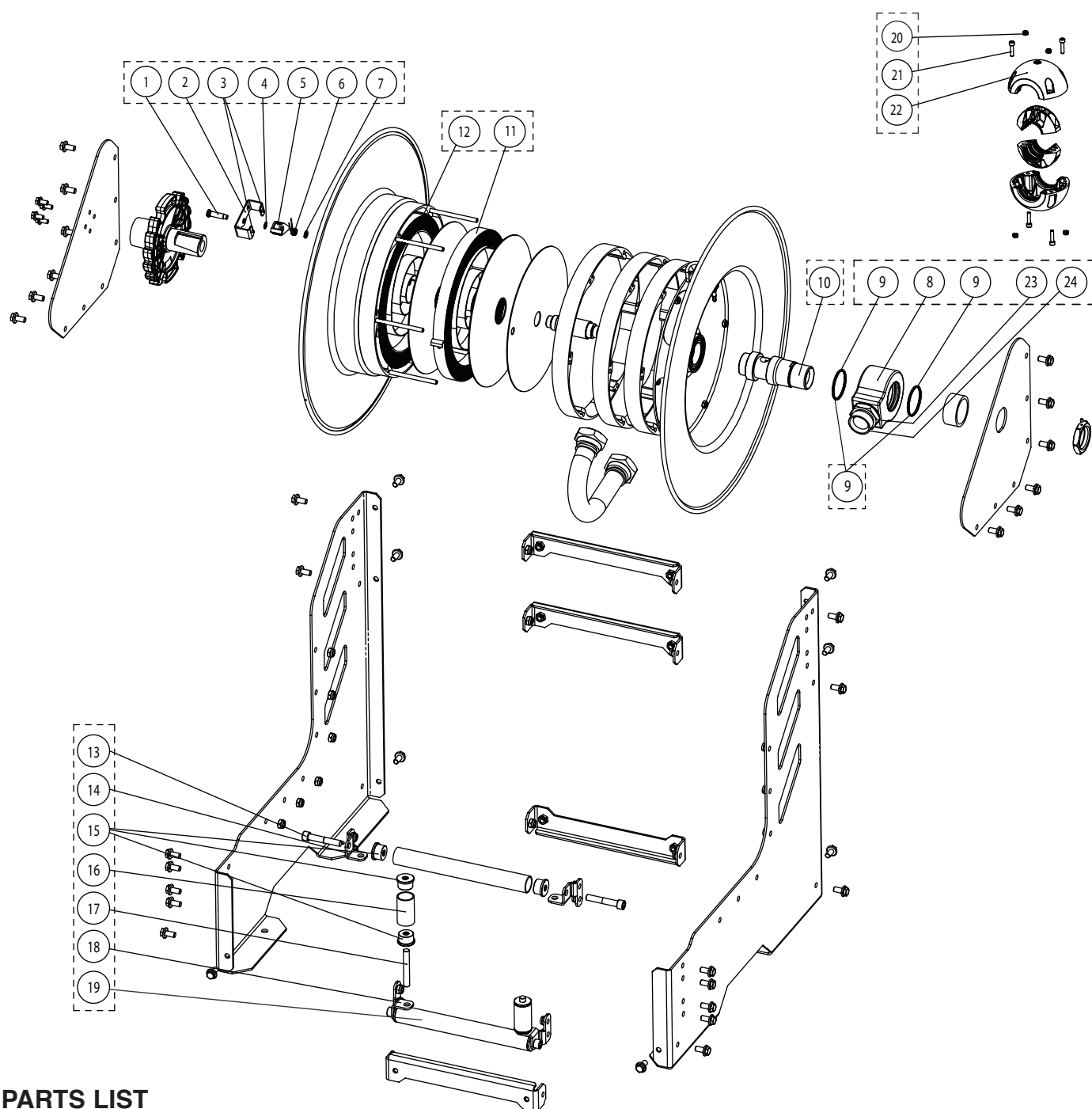
1. With the hose fully wound on the spool and the hose stopper touching the rollers, turn the spool enough to be able to reach the ratchet assembly. Make sure to avoid the spool to turn freely, blocking it safely.
2. Loosen the 2 bolts (1) (Fig. 6), and the 4 nuts (2) (Fig. 6). Remove the ratchet assembly.
3. Clean the components, or replace the ratchet assembly with a new one. In the case of unscrewing the ratchet shaft (3) (Fig. 6), be sure to clean the thread and apply medium-strength threadlocker before screwing it back into the plate (4) (Fig. 6).
4. Assemble the ratchet assembly in place and tight the 2 bolts (1) (Fig. 6) and the 4 nuts (2) (Fig. 6).
5. Make sure the ratchet assembly works properly.

Fig. 6



F15-SERIES HOSE REEL / SLANGUPPRULLARE

PART NO 17885 / ART.NR. 17885



PARTS LIST

ITEM / POS	NAME / BENÄMNING	17885
1, 2, 2x(3), 4, 5, 6, 7	Latch assembly	1788501
4x(13), 2x(14), 8x(15), 2x(16), 2x(17), 2x(18), 2x(19)	Roller outlet assembly	1788502
2x(9)	Swivel seals	1788503
10	Inlet shaft	1788504
8, 2x(9), 23, 24	Swivel assembly	1788505
4x(20), 4x(21), 2x(22)	Hose stopper assembly	1788506
11, 12	Power springs	1788507
-	Outlet hose 15m x 1-1/2"	1788508
-	Inlet hose 1m x 1-1/2"	1788509

F15-SERIES HOSE REEL / SLANGUPPRULLARE

PART NO 17885 / ART.NR. 17885

DECLARATION OF CONFORMITY / DEKLARATION OM ÖVERENSSTÄMMELSE



Alentec & Orion AB, Grustagsvägen 4, 138 40 Älta Sweden, declares hereby that the products:
F15-Series HOSE REEL / SLANGUPPRULLARE PART NO 17885 / ART.NR. 17885 are in conformity with the requirements of the Council's Machinery Directive 2006/42/EC.

Älta April 26, 2022



Alentec & Orion AB, Grustagsvägen 4, 138 40 Älta, deklarerar härmed att produkterna:
F15-Series HOSE REEL / SLANGUPPRULLARE PART NO 17885 / ART.NR. 17885 är tillverkade i överensstämmelse med bestämmelserna i Maskindirektivet 2006/42/EC.

Älta April 26, 2022

Olle Berglund,
Product Manager (Authorized representative for
Eurolube Equipment / Alentec & Orion AB and
responsible for technical documentation).

Produktchef (Auktoriserad representant för
Eurolube Equipment / Alentec & Orion AB och
ansvarig för teknisk dokumentation).



EUROLUBE EQUIPMENT

Alentec & Orion AB, Grustagsvägen 4, SE-138 40 Älta, Sweden

EMAIL eurolube@alentec.se PHONE +46 8-747 67 10 FAX +46 8-715 20 74

www.eurolube.com